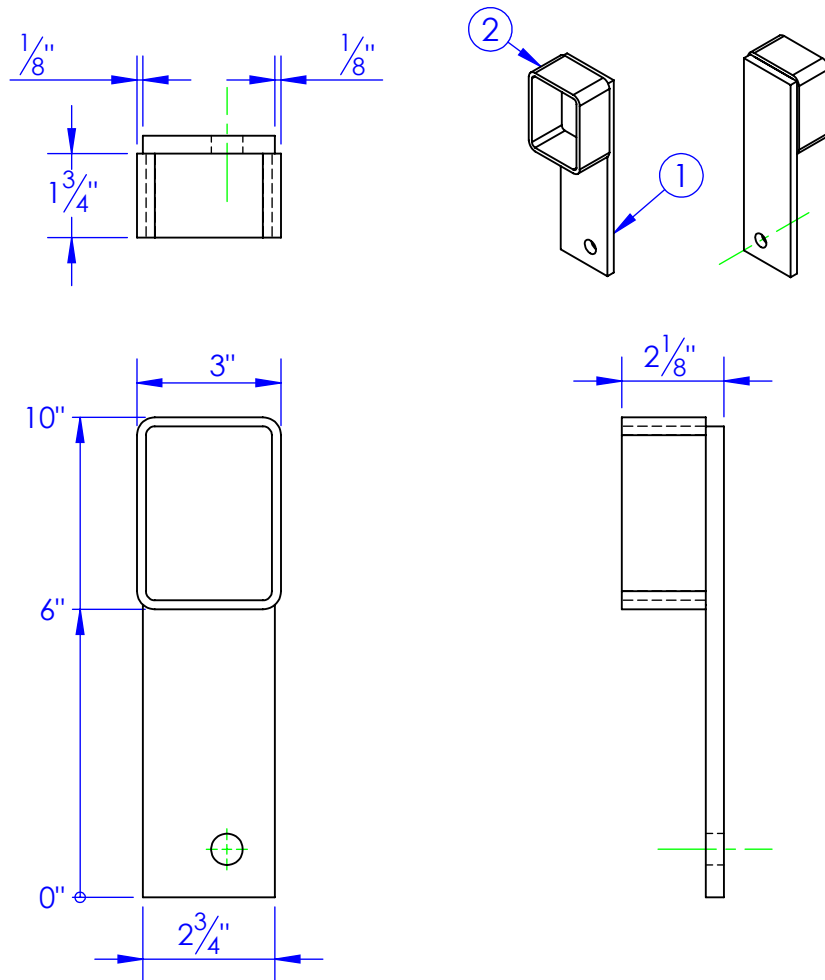


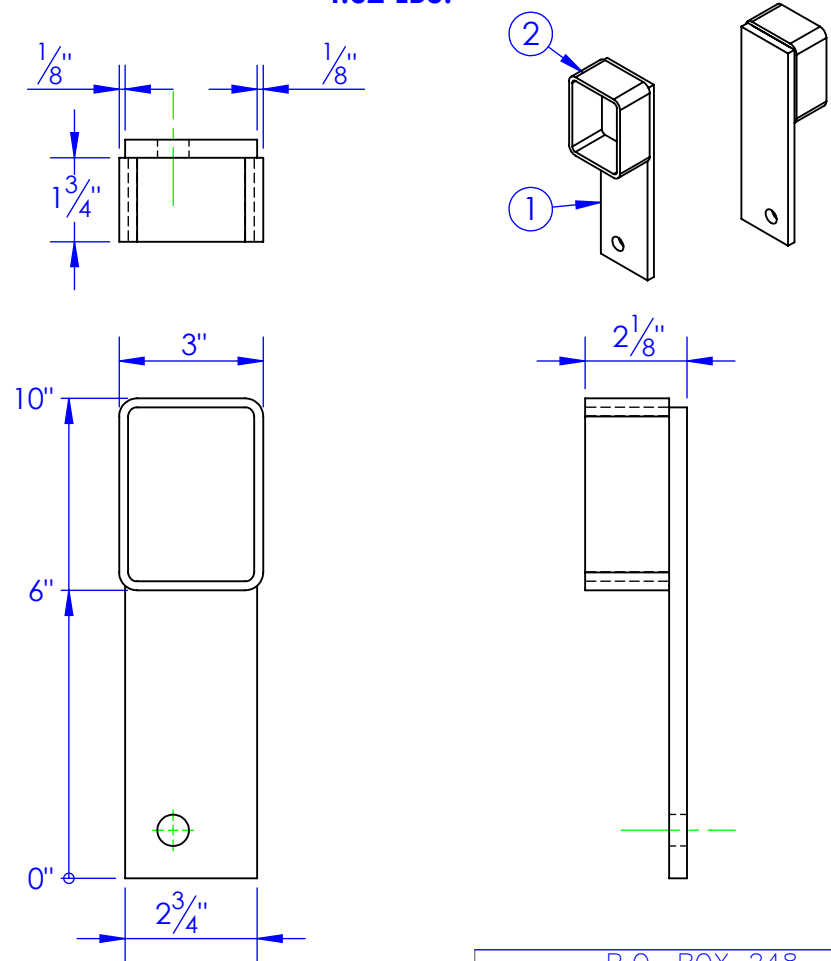
| ITEM NO. | PART NUMBER | DESCRIPTION | MATERIAL | DRAWING # | QTY. |
|----------|------------------------|-----------------------------------|------------------|-----------|------|
| 1 | FP-LL STRAP 9.8125 | LEVEL LOK MOUNTING STRAP 9-13/16" | ST-FI 3/8x2-3/4" | 90-2824 | 1 |
| 2 | FP-RT 4X3X.1875 L 1.75 | LENGTH 1-3/4" | RT 4x3x3/16" | STOCK | 1 |

**FP-FLL6-2 DS
DRIVER SIDE FLL-6 CENTER BRKT
4.02 LBS.**



| ITEM NO. | PART NUMBER | DESCRIPTION | MATERIAL | DRAWING # | QTY. |
|----------|------------------------|-----------------------------------|------------------|-----------|------|
| 1 | FP-LL STRAP 9.8125 | LEVEL LOK MOUNTING STRAP 9-13/16" | ST-FI 3/8x2-3/4" | 90-2824 | 1 |
| 2 | FP-RT 4X3X.1875 L 1.75 | LENGTH 1-3/4" | RT 4x3x3/16" | STOCK | 1 |

**FP-FLL6-2 PS
PASSENGER SIDE FLL-6 CENTER BRKT
4.02 LBS.**



| REV. | DESCRIPTION | DATE |
|------|-----------------|------------|
| A | INITIAL RELEASE | 11-29-2016 |

PROPRIETARY AND CONFIDENTIAL
THE INFORMATION CONTAINED IN THIS DRAWING IS THE SOLE PROPERTY OF TRIPLE C INC. ANY REPRODUCTION IN PART OR AS A WHOLE WITHOUT THE WRITTEN PERMISSION OF TRIPLE C INC. IS PROHIBITED.

| | | | |
|--|--|-----------------------------------|------------------|
| DIMENSIONS ARE IN INCHES TOLERANCES: FRACTIONAL $\pm 1/16$ ANGULAR: MACH ± 1 BEND \pm TWO PLACE DECIMAL ± 010 THREE PLACE DECIMAL ± 005 | | NAME | DATE |
| | | DRAWN | ETHAN 11/29/2016 |
| | | PART # | SEE DWG |
| | | ASM # | |
| | | COMMENTS: | |
| MATERIAL -- | | CENTER BRACKET FLL-6 WLDMT. | |
| DO NOT SCALE DRAWING | | | |

P.O. BOX 248,
SABETHA, KS 66534

TRIPLE C
INC.

| | | |
|------------|------------|--------------|
| SIZE | DWG. NO. | REV. |
| A | 90-1868 | A |
| SCALE: 1:4 | WEIGHT: -- | SHEET 1 OF 1 |